

Parameter introduction

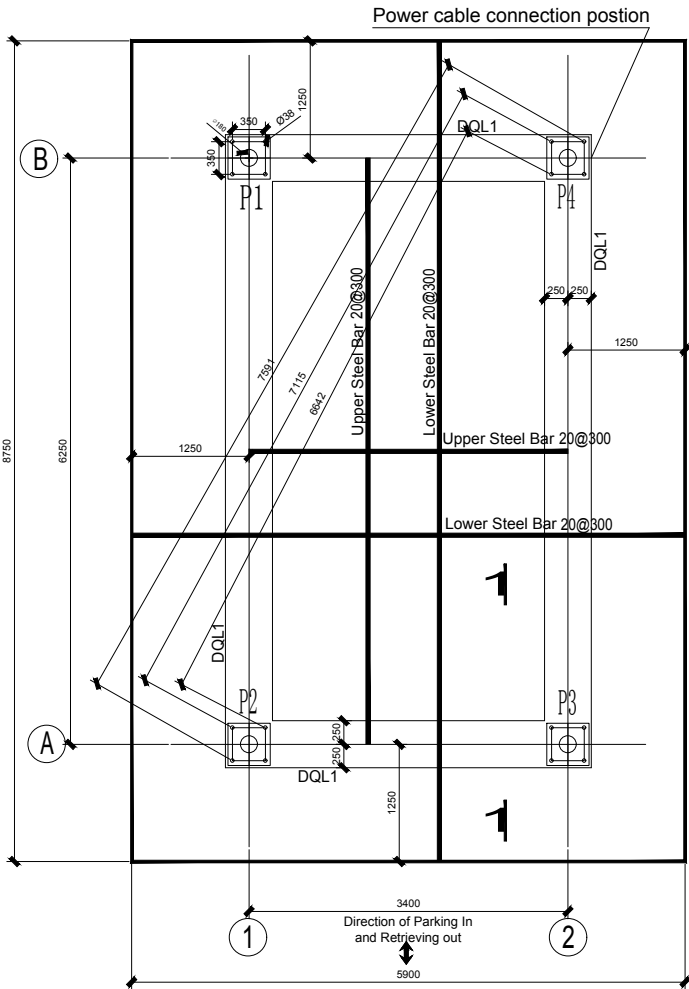
NO.	Parameters		Remarks
1	Car size	Length ≤mm	5300
2		Width ≤mm	2000
3		Height ≤mm	1550
4		Weight ≤Kg	1800
5	Equipment Size	Length ≤mm	6500
6		Width ≤mm	5200
7		Height ≤mm	17300
8	Max. Retrieve Car Time	sec	120
9	Lifting Speed	m/min	0-5.5
10	Power	3phases 5 wires; 50/60Hz	
11	Motor	15KW	
12	Safety device:Light sensitive control		
13	Operation Control Mode:Button IC card		

- 1.Vertical Rotary Parking System is designed to park 16 cars. Suitable parking quantity is 16 cars.
- 2.Perform standard “ Vertical Rotary Type of Mechanical Parking Equipment” JB/T10215-2000

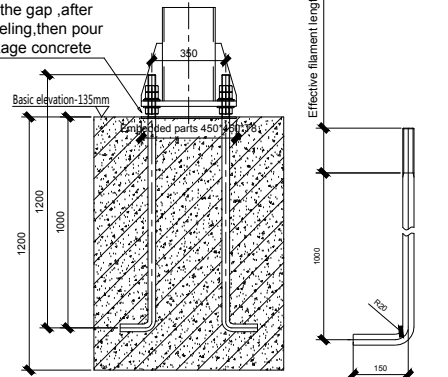
7	PCX10D-07	Large chain	2
6	PCX10D-06	Car tray assembly	16
5	PCX10D-05	Electrical mounting bracket	1
4	PCX10D-04	Anti-swing rail mounting bracket	1
3	PCX10D-03	Anti-swing rail	1
2	PCX10D-02	Transmission section	1
1	PCX10D-01	Combined frame assembly	1

NO	Drawing number	name	Quantity	Remarks
		Assembly drawing		MUTRADE INDUSTRIAL CORP.
				PCX16D

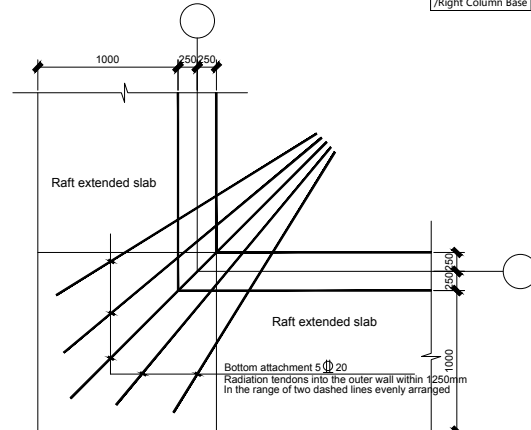
普通用件登记
描图
校描
旧底图总号
签字
日期



Use horn fill in the gap ,after padded solid leveling,then pour into non-shrinkage concrete



Foundation drawing embedded drawing

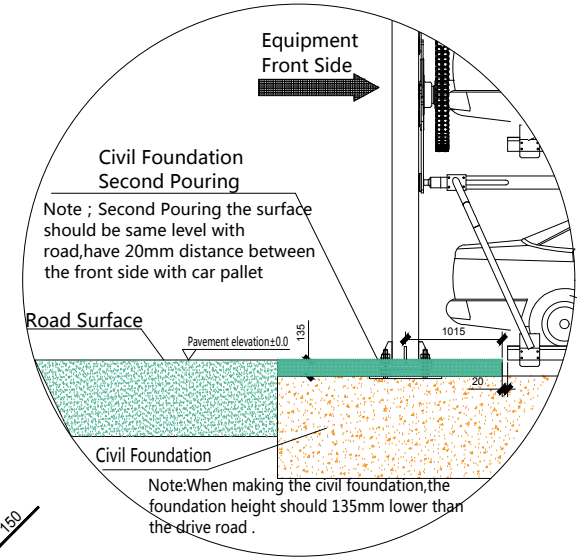


picture 1

Foundation design description

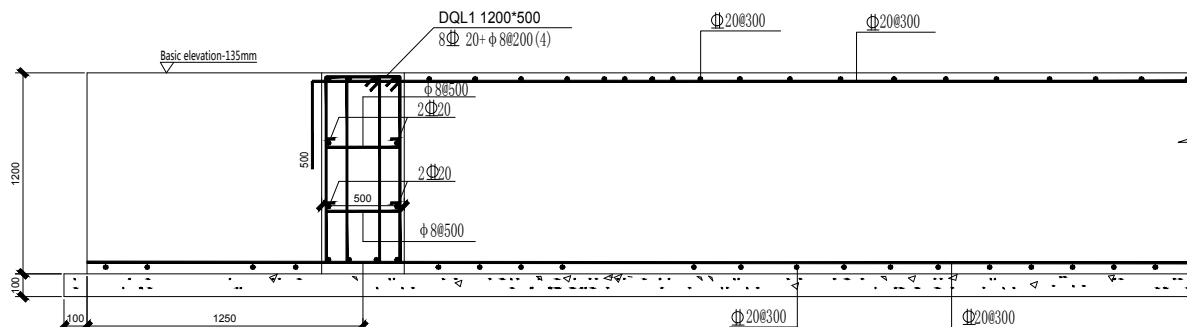
1. The bearing capacity of foundation should be referred to the standard bearing capacity value of the mucky silty clay $f_k=65\text{Kpa}$. Rod sounding implemented after foundation trench start, borer for depth of 2m with distance of 2m with plum blossom shape. Make soil layer situation record, require the inspection before starting for next step.
2. This project uses the raft foundation, which in figure marked raft boundary size are not in clued cushion, cushion C10, thick 100, edge outside expansion of 100, the bottom of the cushion elevation -1.435m.
3. Raft concrete C30, thick 1200mm, raft outside extension part of the end of the thickness of 1200mm, raft bottom elevation -1.335m, raft main reinforcement concrete layer thickness is 40mm.
4. Steel Rebar: ---HPB235, ---HRB335, ---HRB400
5. Raft concrete should be added with micro-expansion agent, and should be strengthened after pouring maintenance, to prevent cracks.
6. All corners of the Raft need add Extra-radiating methods, reference picture 1
7. Raft board with a horse stool, arranged according to the shape of the plum in each room, the distance of 1.5 meters.
8. Four embedded steel plate surface to ensure the level of flatness less than 10mm, diagonal error $\pm 5\text{mm}$.

Column base	Vertical force (Downward)	X/Y direction force
Front Left /Right Column Base	22.18T	1.13T
Back Left /Right Column Base		



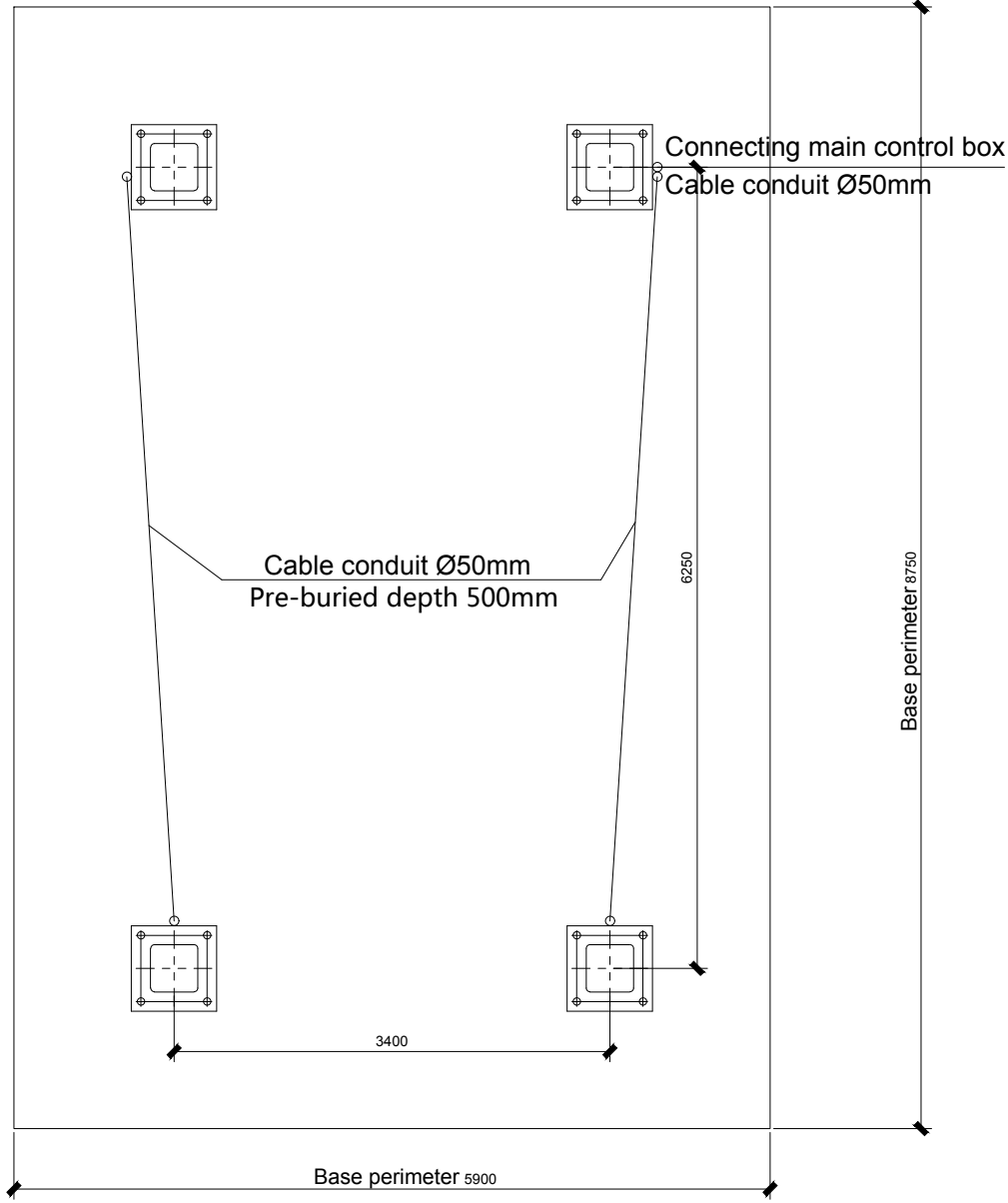
Basic and pavement

Connection beam

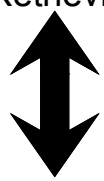


1-1

Vertical Rotary Parking System	
Groups Foundation Drawing 9 layers Sedan	MUTRADE INDUSTRIAL CORP.



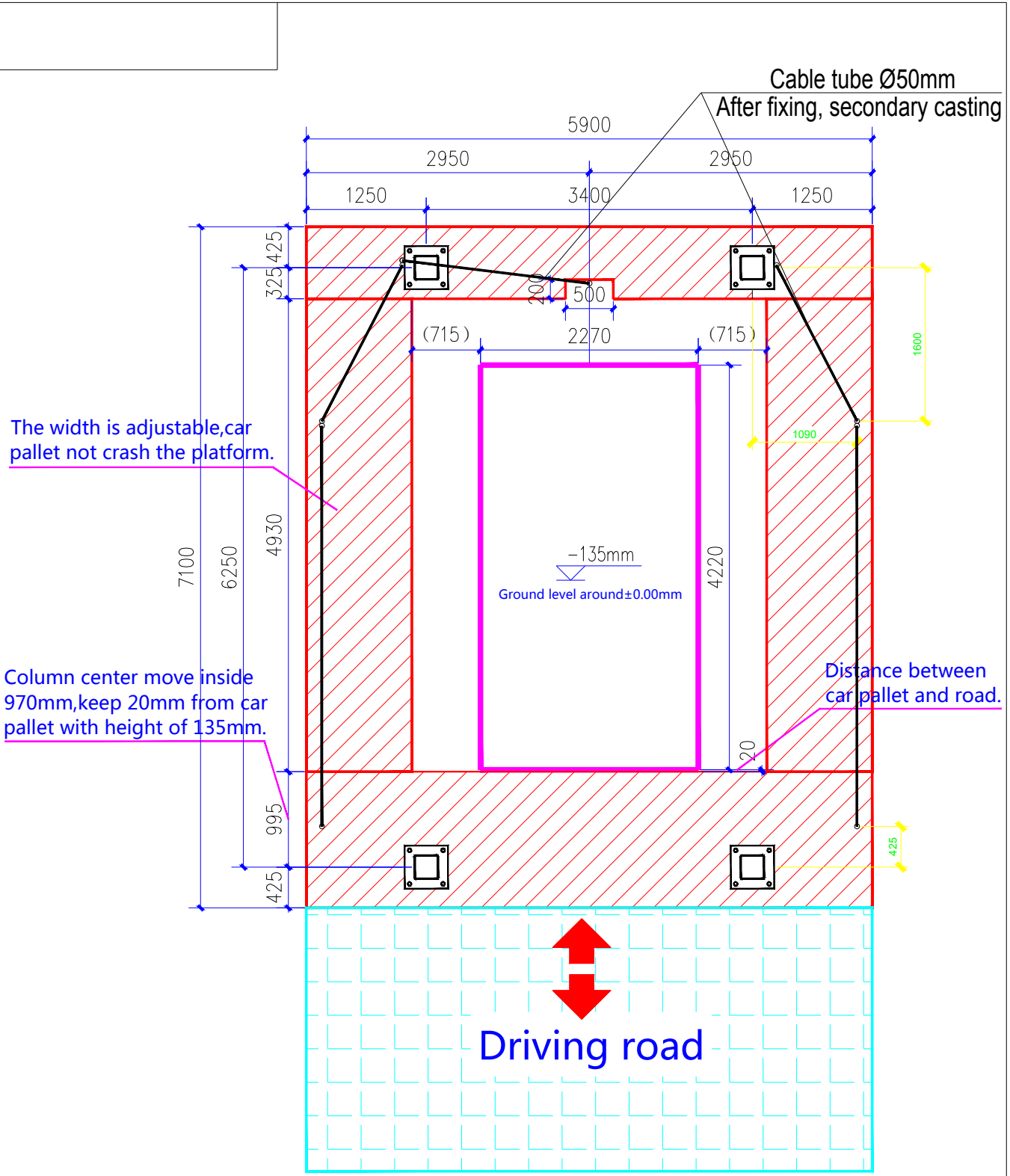
Direction of Parking In
and Retrieving out



**Vertical Rotary
Parking System**

Embedded pipe plan for
single equipment

MUTRADE INDUSTRIAL CORP.



- Note : 1、 Red shadow is area of second pouring concrete ;
 2、 The difference in the internal ground level of the foundation should not be too large for drainage. ;
 3、 Ø50 After the tube is fixed, the second pouring is performed..

Second pouring concrete layout of PCX14D-PCX20D

MUTRADE INDUSTRIAL CORP.

Vertical Rotary Parking System